

(CLTCH1.CLTCH) 17117

CLTCH ONE DEPARTURE (RNAV)

EASTERN WEST VIRGINIA RGNL/SHEPHERD FIELD (MRB)

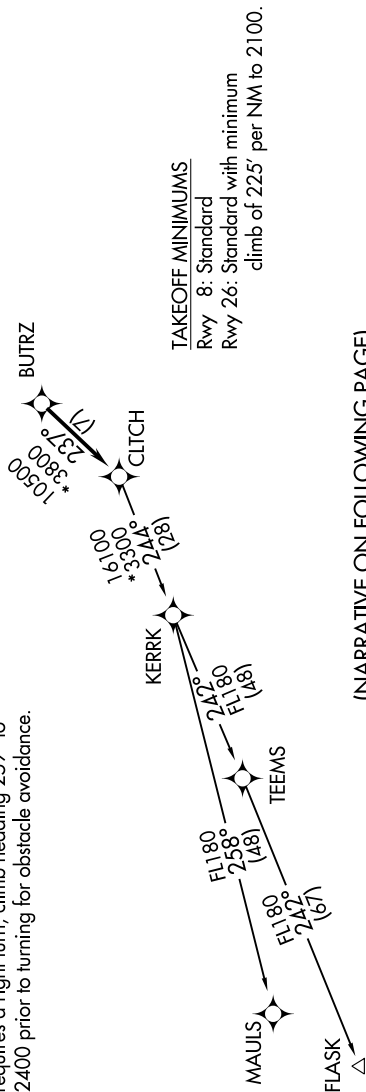
AL-249 (FAA)

MARTINSBURG, WEST VIRGINIA

TOP ALTITUDE:
3000

ASOS
119.925
CLNC DEL
121.8 257.65
132.075 269.075 (When Tower Closed)
GND CON
121.8 257.65
MARTINSBURG TOWER ★
124.3 (CTAF) 233.7
POTOMAC DEP CON
12.825 239.025

NOTE: RNAV 1.
NOTE: RADAR required.
NOTE: DME/DME/IRU or GPS required.
NOTE: Takeoff Rwy 8: If issued an ATC heading that requires a westbound turn, climb heading 079° to 1200 prior to turning for obstacle avoidance.
NOTE: Takeoff Rwy 26: If issued an ATC heading that requires a right turn, climb heading 259° to 2400 prior to turning for obstacle avoidance.



TAKEOFF MINIMUMS
Rwy 8: Standard
Rwy 26: Standard with minimum climb of 225' per NM to 2100.

(NARRATIVE ON FOLLOWING PAGE)
(NOTES CONTINUED ON FOLLOWING PAGE)

NOTE: Chart not to scale.

NE-4, 17 AUG 2017 to 14 SEP 2017

NE-4, 17 AUG 2017 to 14 SEP 2017

CLTCH ONE DEPARTURE (RNAV)

(CLTCH1.CLTCH) 31MAR16

MARTINSBURG, WEST VIRGINIA

EASTERN WEST VIRGINIA RGNL/SHEPHERD FIELD (MRB)