


WAAS CH <b>53609</b> <b>W26A</b>	APP CRS <b>259°</b>	Rwy Idg <b>7815</b> TDZE <b>548</b> Apt Elev <b>565</b>
--	------------------------	---

# RNAV (GPS) RWY 26

EASTERN WEST VIRGINIA RGNL/SHEPHERD FIELD (MRB)

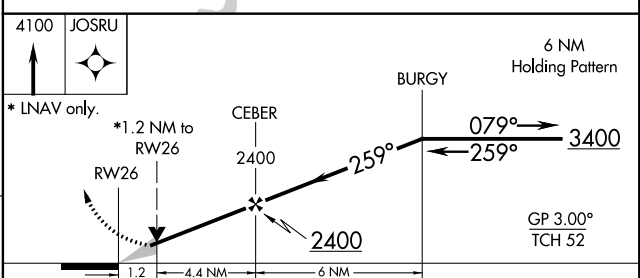
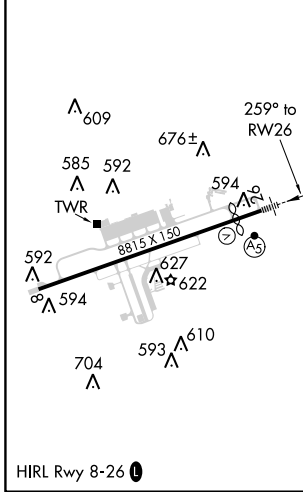
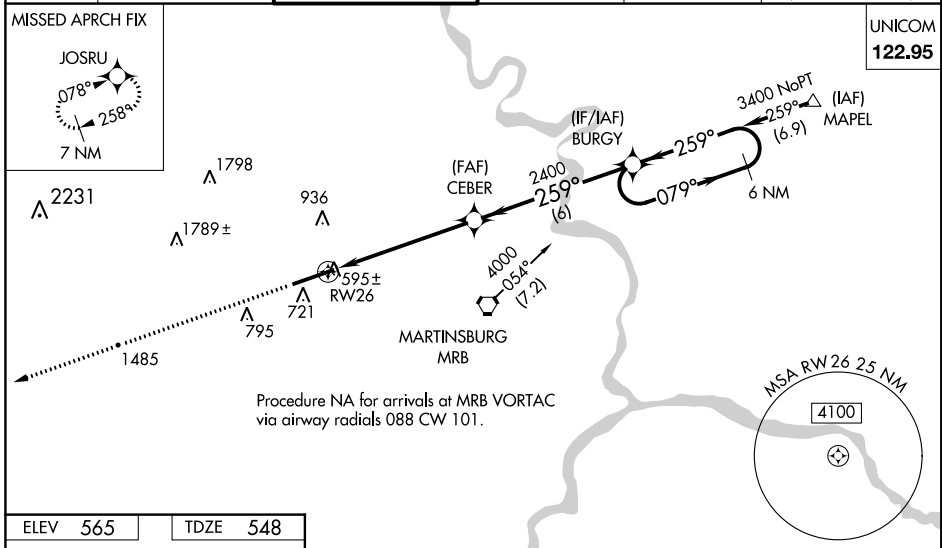
**▼** Baro-VNAV NA when using Hagerstown altimeter setting. DME/DME RNP-0.3 NA.  
**▲** For uncompensated Baro-VNAV systems, LNAV/VNAV NA below -16°C (4°F) or above 54°C (130°F). VDP NA when using Hagerstown altimeter setting. When local altimeter setting not received, use Hagerstown altimeter setting and increase all DA 70 feet and all MDA 80 feet, increase LNAV/VNAV all Cats, LNAV Cats C, D, E and Circling Cat C and D visibility ¼ mile. For inoperative MALSR increase LPV Cat E visibility to ¾ mile, LNAV/VNAV Cat E to 2¼ mile, LNAV Cat E to 1½ mile. For inoperative MALSR when using Hagerstown altimeter setting increase LPV all Cats visibility to 1 mile, LNAV/VNAV Cat E visibility to 2½ mile and LNAV Cat E visibility to 1¾ mile.

MALSR



MISSED APPROACH:  
Climb to 4100 direct JOSRU and hold, continue climb-in-hold to 4100.

ASOS <b>119.925</b>	POTOMAC APP CON <b>132.075 269.075</b>	MARTINSBURG TOWER ★ <b>124.3</b> (CTAF) <b>0 233.7</b>	GND CON <b>121.8 257.65</b>	CLNC DEL <b>121.8 257.65</b>	CLNC DEL <b>132.075 269.075</b> (When twr closed)
------------------------	---	---	--------------------------------	---------------------------------	---



CATEGORY	A	B	C	D	E
LPV DA	798-½		250 (300-½)		
LNAV/VNAV DA	1213-1¾		665 (700-1¾)		
LNAV MDA	980-½	432 (500-½)	980-¾ 432 (500-¾)	980-1	432 (500-1)
<b>C</b> CIRCLING	1040-1 475 (500-1)	1240-1 675 (700-1)	1240-2 675 (700-2)	1260-2¼ 695 (700-2¼)	2140-3 1575 (1600-3)

NE-4, 17 AUG 2017 to 14 SEP 2017

NE-4, 17 AUG 2017 to 14 SEP 2017