



OPERATIONS FORECAST AND CRITICAL DESIGN AIRCRAFT

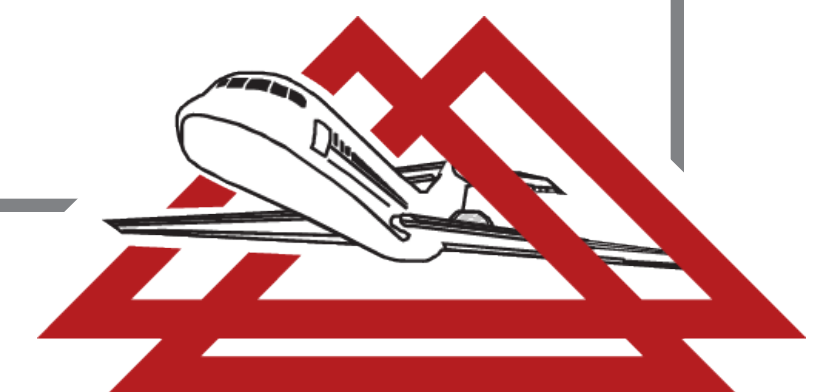
	2016 OPERATIONS	2021	2026	2036
TOTAL BASED AIRCRAFT	91	95	99	108
BASED AIRCRAFT BY TYPE				
SINGLE-ENGINE	67	67	67	67
MULTI-ENGINE	13	13	13	13
TURBO-PROP	2	3	4	6
JET	8	9	10	12
ROTORCRAFT	1	2	3	6
LIGHT SPORT	0	1	2	4
TOTAL OPERATIONS	26,135	27,741	29,446	33,177
LOCAL OPERATIONS	9,409	9,620	9,816	10,170
ITINERANT OPERATIONS				
GA ITINERANT	10,193	10,693	11,210	12,293
AIR TAXI	1,306	1,465	1,639	2,034
MILITARY	5,227	5,963	6,781	8,680
OPERATIONS BY AIRCRAFT TYPE				
SINGLE-ENGINE	12,624	12,740	12,813	12,826
MULTI-ENGINE	2,441	2,464	2,478	2,480
TURBO-PROP	5,161	5,775	6,442	7,930
JET	5,083	5,829	6,660	8,608
ROTORCRAFT	732	815	905	1,103
LIGHT SPORT	94	118	148	230



EXISTING - RUNWAY 8-26 AND ANG FACILITIES
C-IV (C-17 GLOBEMASTER)



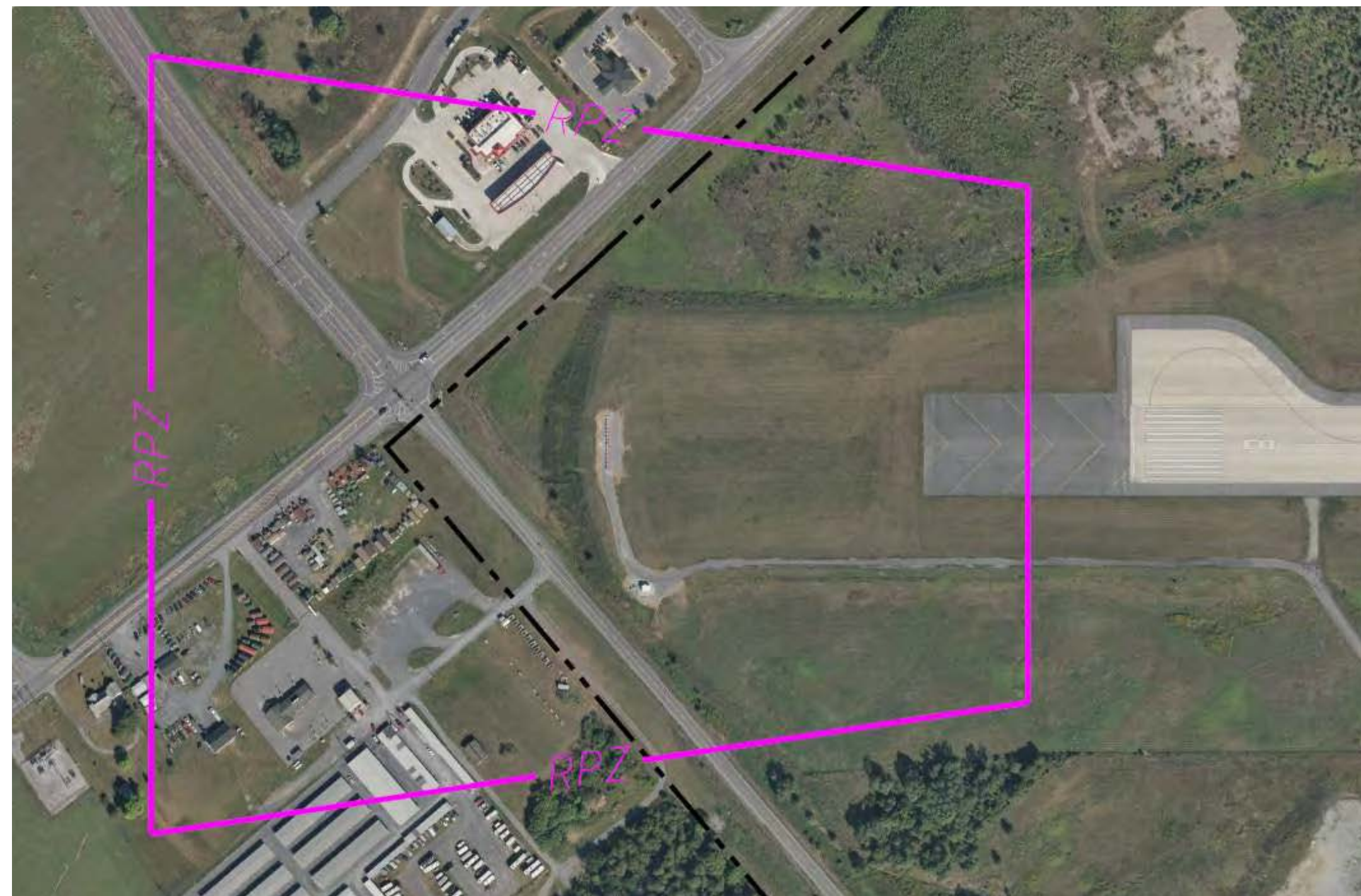
EXISTING - GENERAL AVIATION FACILITIES
B-II (KING AIR 200)



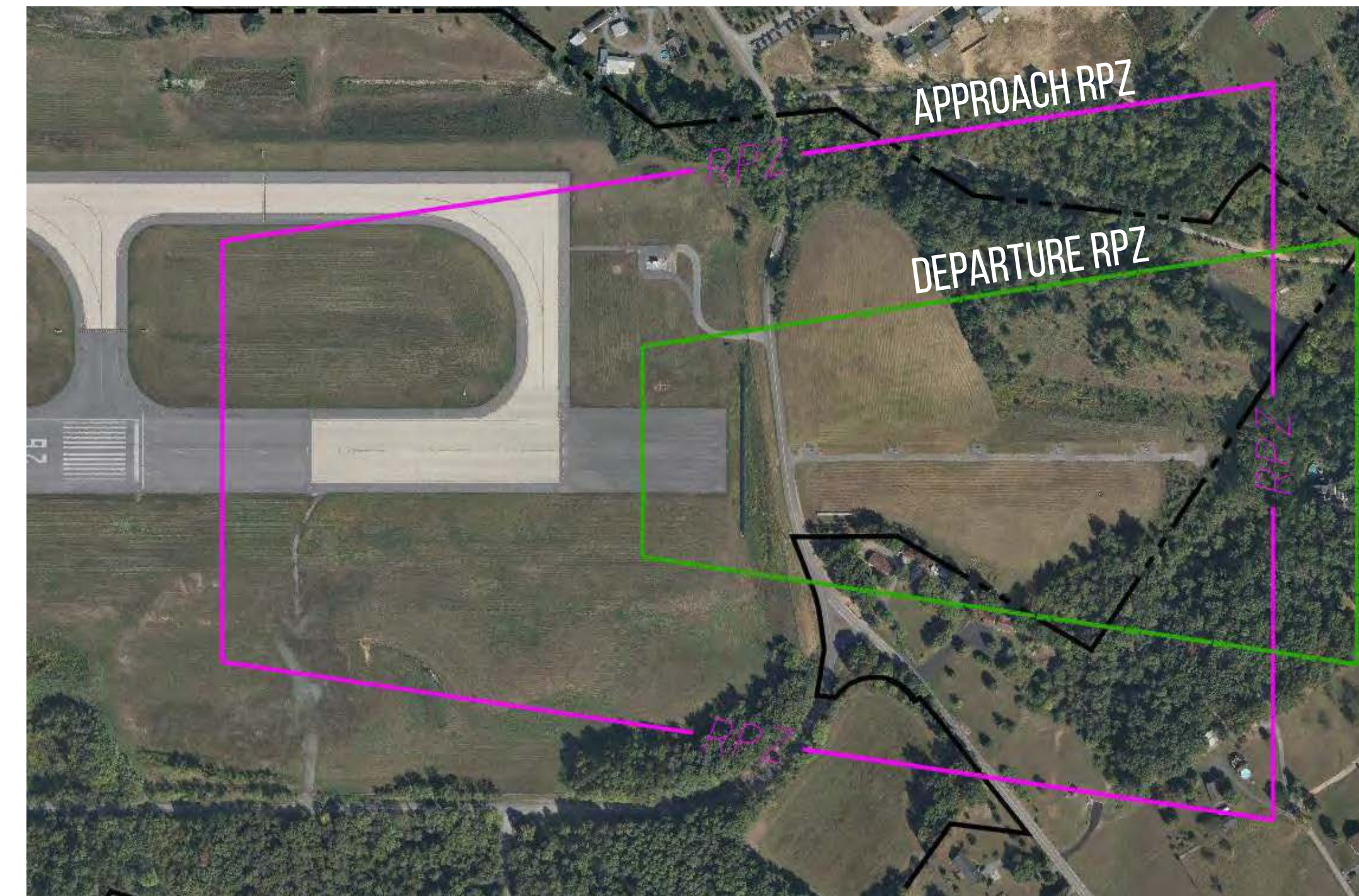


It is FAA policy that the RPZ's be kept clear of incompatible land uses to enhance public safety of people and property on the ground.

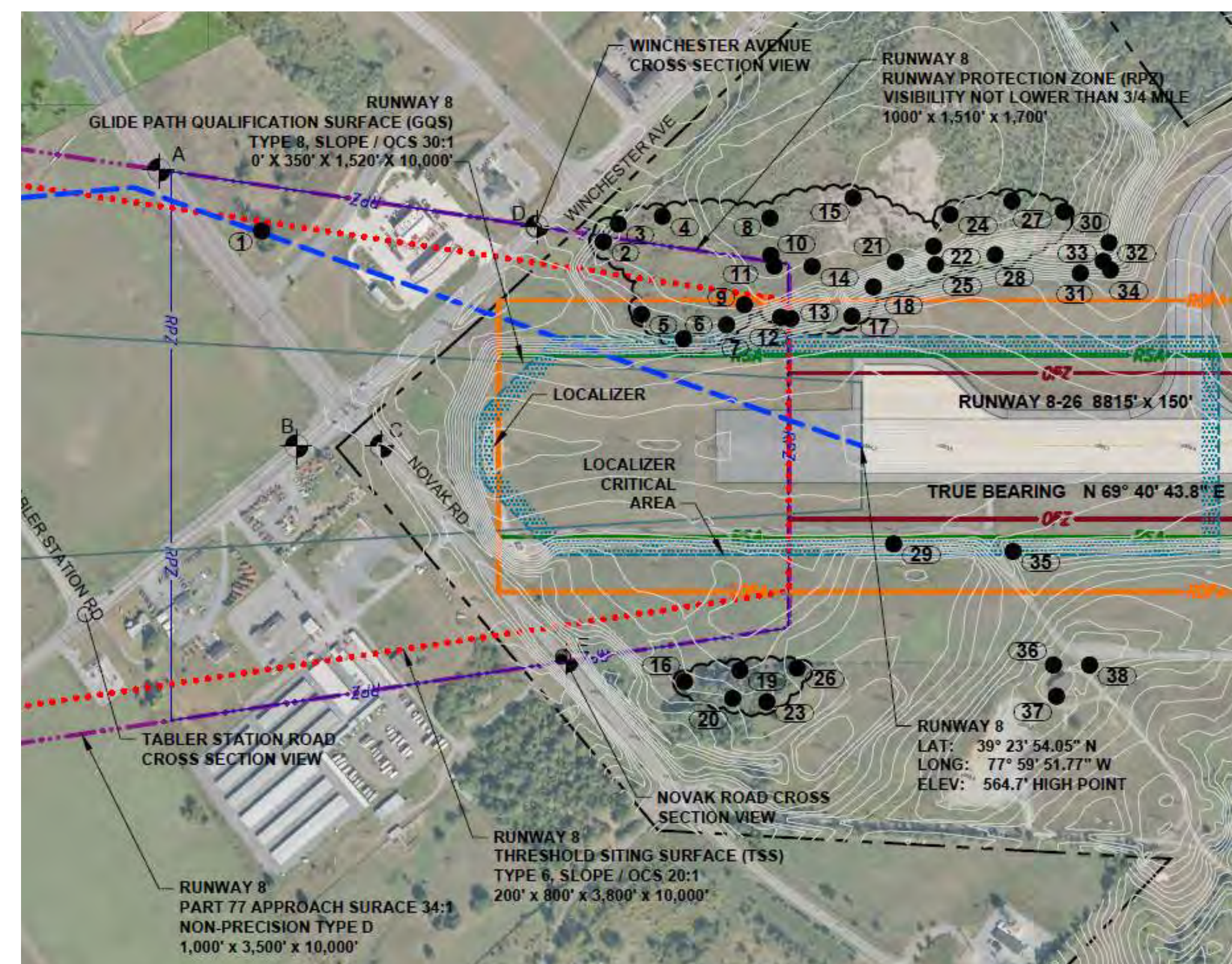
RUNWAY PROTECTION ZONES (RPZ) AND IDENTIFIED AIRSPACE OBSTRUCTIONS



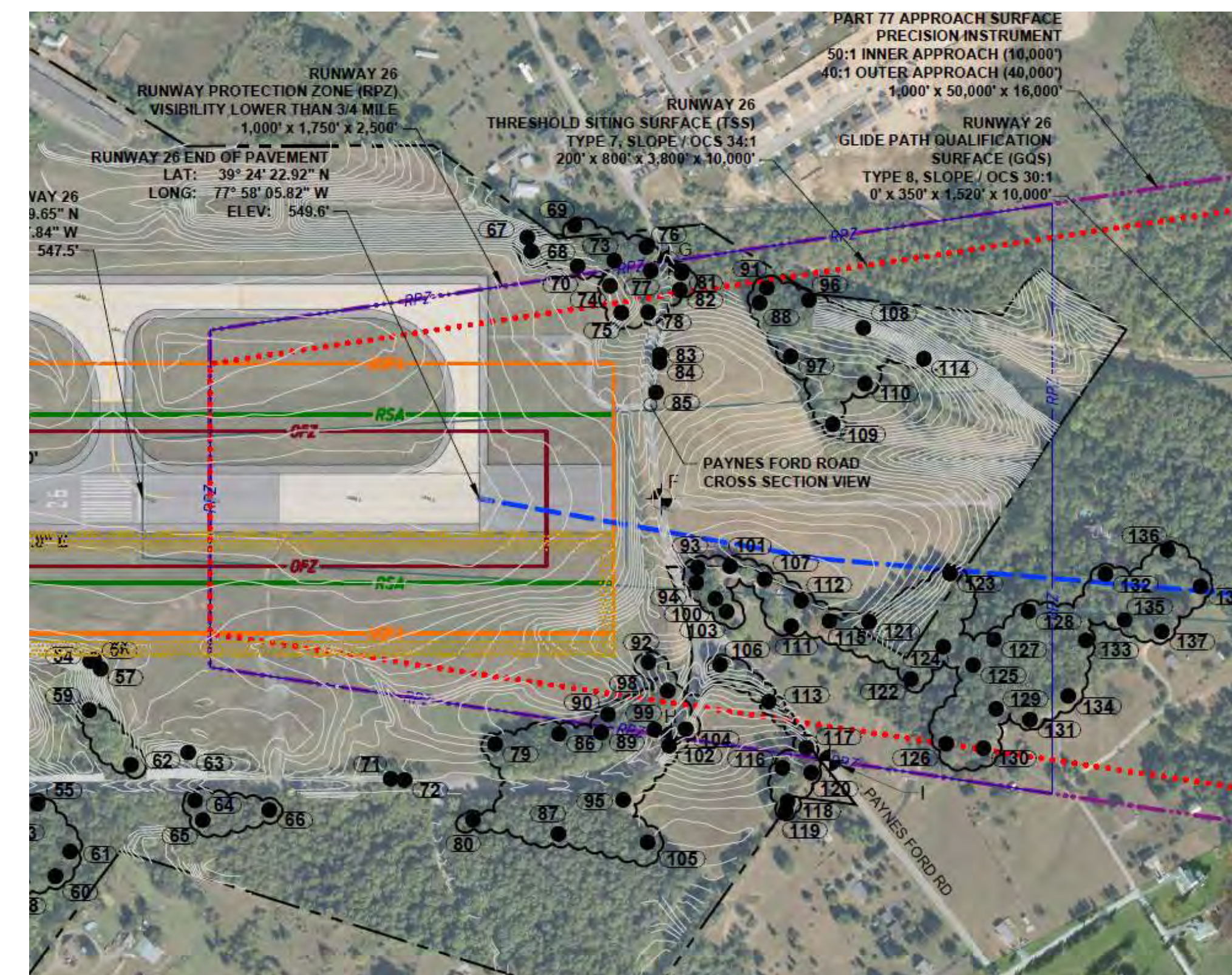
EXISTING - RUNWAY 8 RPZ
1,000' X 1,510' X 1,700'



EXISTING - RUNWAY 26 RUNWAY RPZ
APPROACH: 1,000' X 1,750' X 2,500' DEPARTURE: 500' X 1,010' X 1,700'

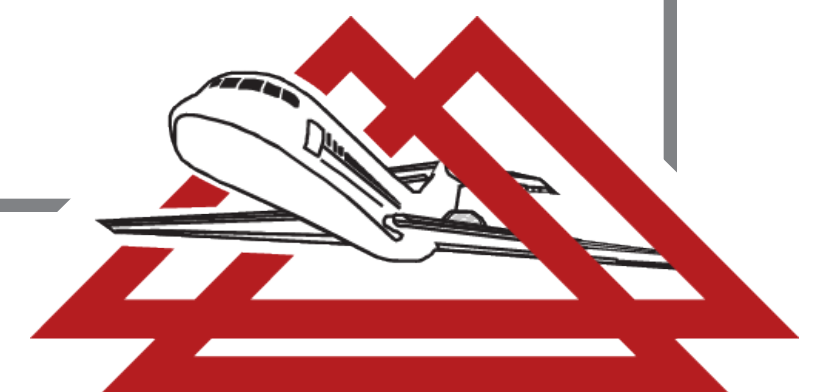


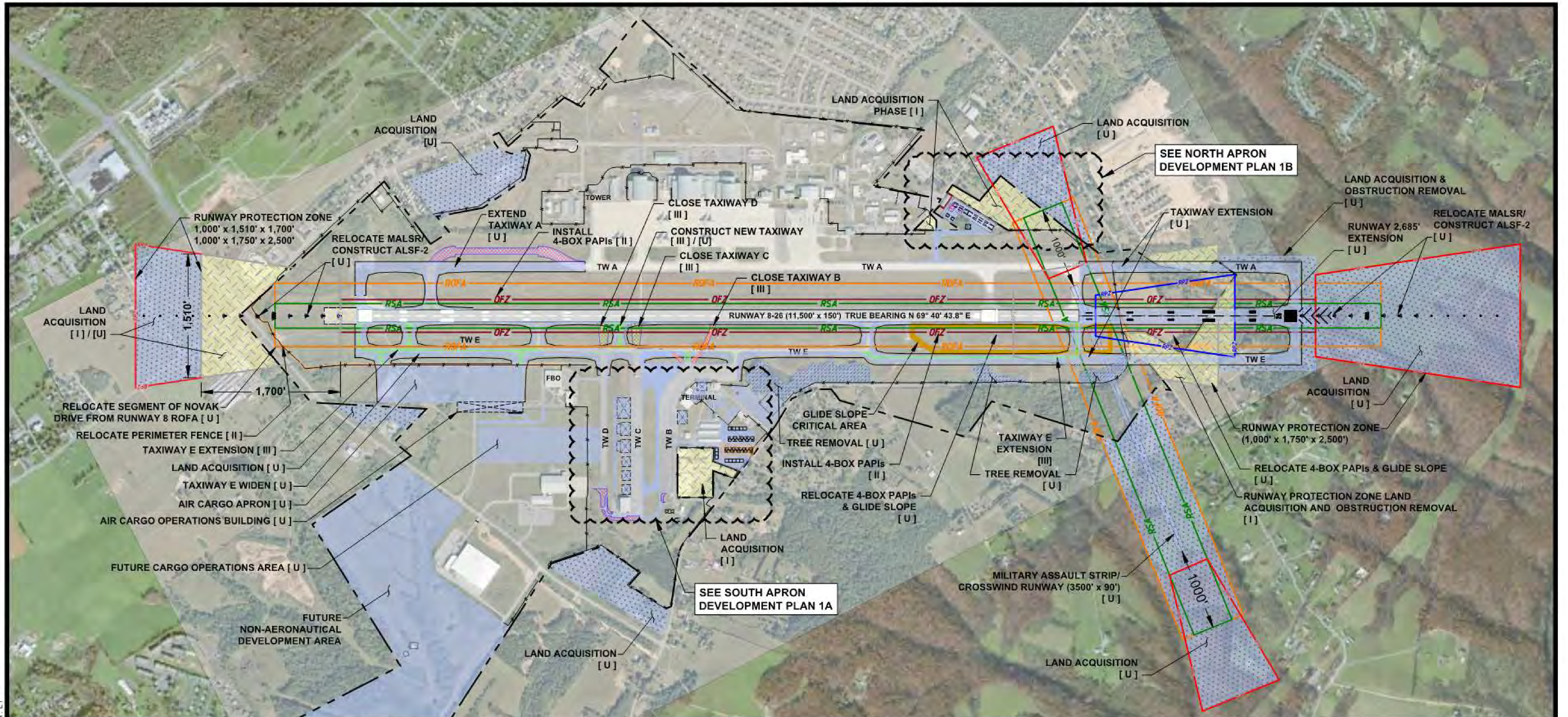
RUNWAY 8 END



RUNWAY 26 END

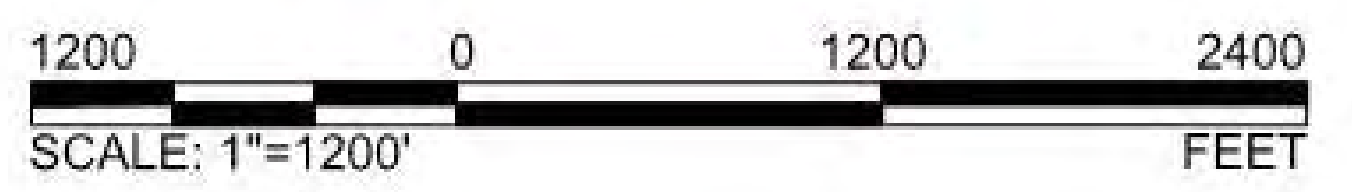
EXISTING OBSTRUCTIONS TO AIRSPACE





LEGEND			
DESCRIPTION	EXISTING	FUTURE	ULTIMATE
AIRPORT BUILDINGS	NA		
LAND ACQUISITION	NA		
PAVEMENT REMOVAL / BLDG DEMO	NA		SAME
AIRPORT PROPERTY LINE			SAME
RWY OBSTACLE FREE AREA (ROFA) B-II		SAME	SAME
RUNWAY SAFETY AREA (RSA) B-II		SAME	SAME
RUNWAY PROTECTION ZONE			
FENCE			

DEVELOPMENT PROGRAM	
PHASE I DEVELOPMENT (0 - 5)	[I]
PHASE II DEVELOPMENT (6 - 10)	[II]
PHASE III DEVELOPMENT (11 - 20)	[III]
ULTIMATE DEVELOPMENT (BEYOND 20)	[U]



DRAFT



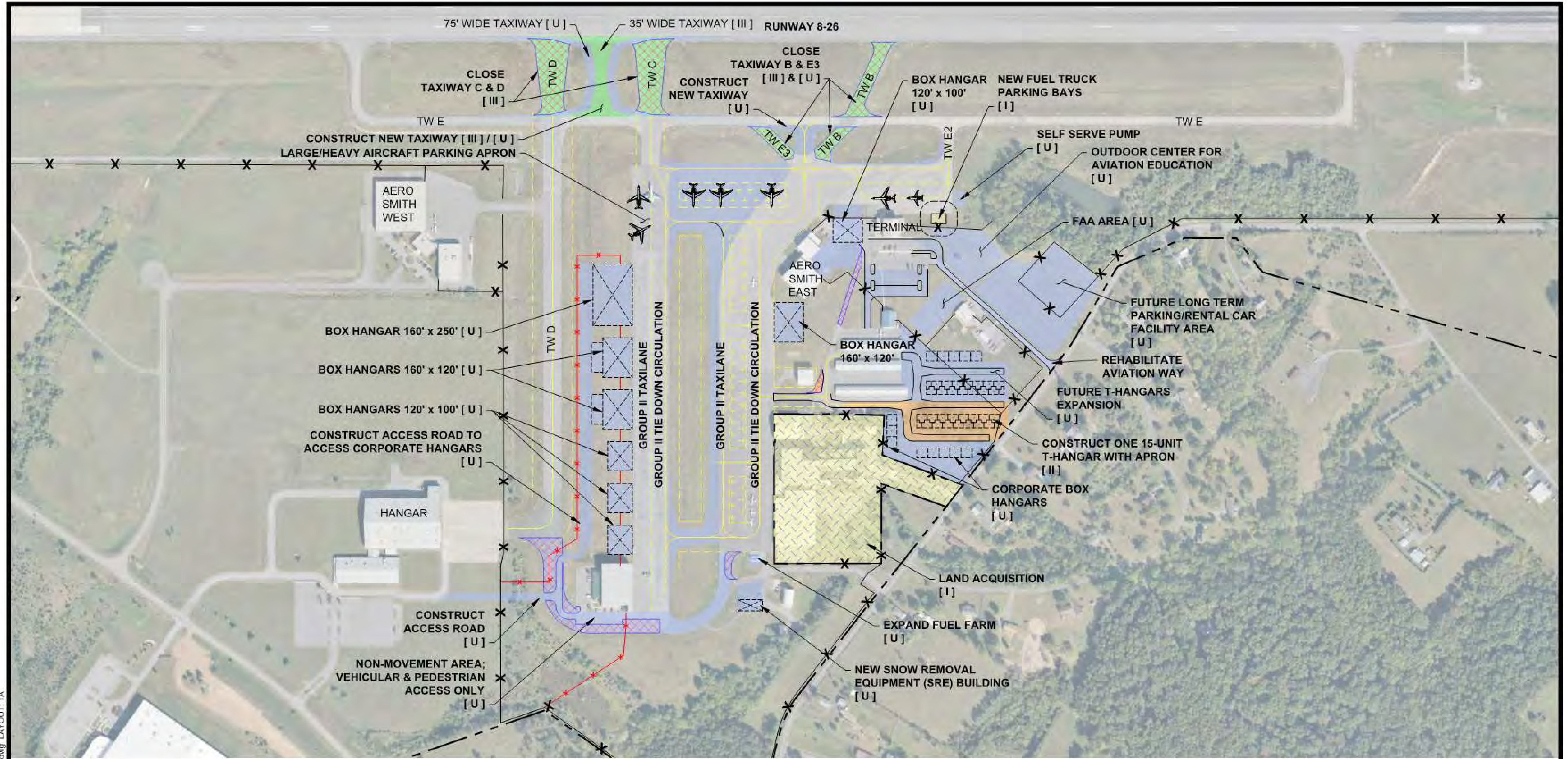
**PREFERRED AIRPORT DEVELOPMENT PLAN - FUTURE AND ULTIMATE
EASTERN WEST VIRGINIA REGIONAL AIRPORT**

**EXHIBIT
1**

DRAWN BY: MRM / RWW CHECKED BY: CAR / TDH SCALE: 1"=1200' DATE: APRIL 2018

DRAWING: 16051-001-Airport Future Ultimate Development.dwg LAYOUT: L1

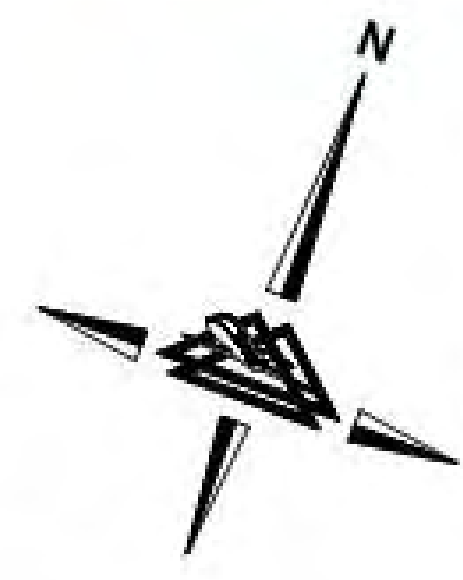
16051-001-Airport Future Ultimate Development.dwg L1.dwg 11/11/2018 11:11:11 AM 11/11/2018 11:11:11 AM



DRAWING: 16051-exh-Alt 1A -Terminal Area UII Development.dwg LAYOUT: 1A

LEGEND			
DESCRIPTION	EXISTING	FUTURE	ULTIMATE
AIRPORT BUILDINGS	NA		
LAND ACQUISITION	NA		
PAVEMENT REMOVAL / BLDG DEMO	NA		SAME
AIRPORT PROPERTY LINE			SAME
FENCE			

DEVELOPMENT PROGRAM	
PHASE I DEVELOPMENT (0 - 5)	[I]
PHASE II DEVELOPMENT (6 - 10)	[II]
PHASE III DEVELOPMENT (11 - 20)	[III]
ULTIMATE DEVELOPMENT (BEYOND 20)	[U]



DRAFT

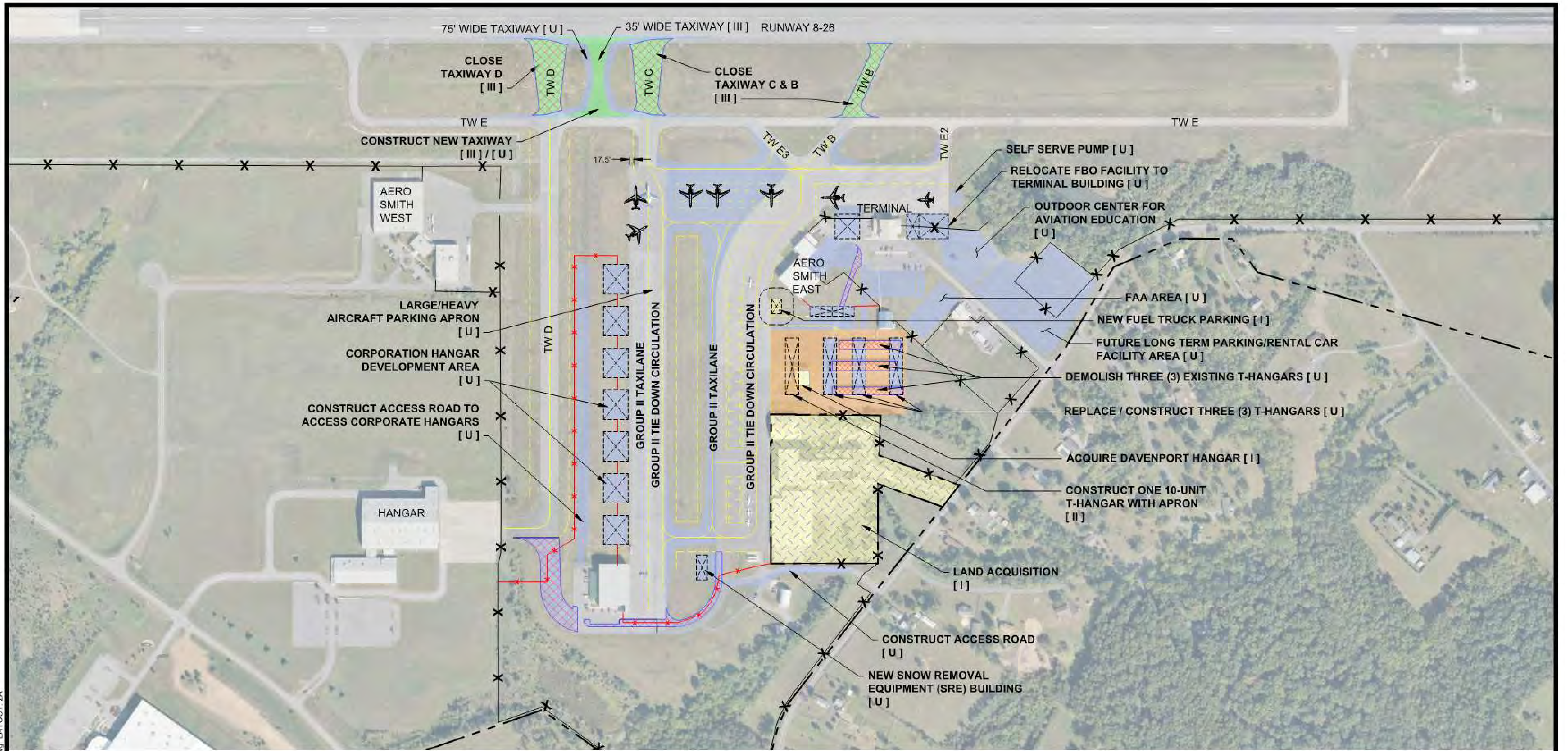


**SOUTH APRON DEVELOPMENT - ALTERNATE 1
EASTERN WEST VIRGINIA REGIONAL AIRPORT**

**EXHIBIT
1**

DRAWN BY: MRM / RWW CHECKED BY: CAR / TDH SCALE: 1"=400' DATE: APRIL 2018

16051-exh-Alt 1A -Terminal Area UII Development.dwg LAYOUT: 1A



LEGEND			
DESCRIPTION	EXISTING	FUTURE	ULTIMATE
AIRPORT BUILDINGS	NA		
LAND ACQUISITION	NA		
PAVEMENT REMOVAL / BLDG DEMO	NA		SAME
AIRPORT PROPERTY LINE			SAME
FENCE			

DEVELOPMENT PROGRAM	
PHASE I DEVELOPMENT (0 - 5)	[I]
PHASE II DEVELOPMENT (6 - 10)	[II]
PHASE III DEVELOPMENT (11 - 20)	[III]
ULTIMATE DEVELOPMENT (BEYOND 20)	[U]



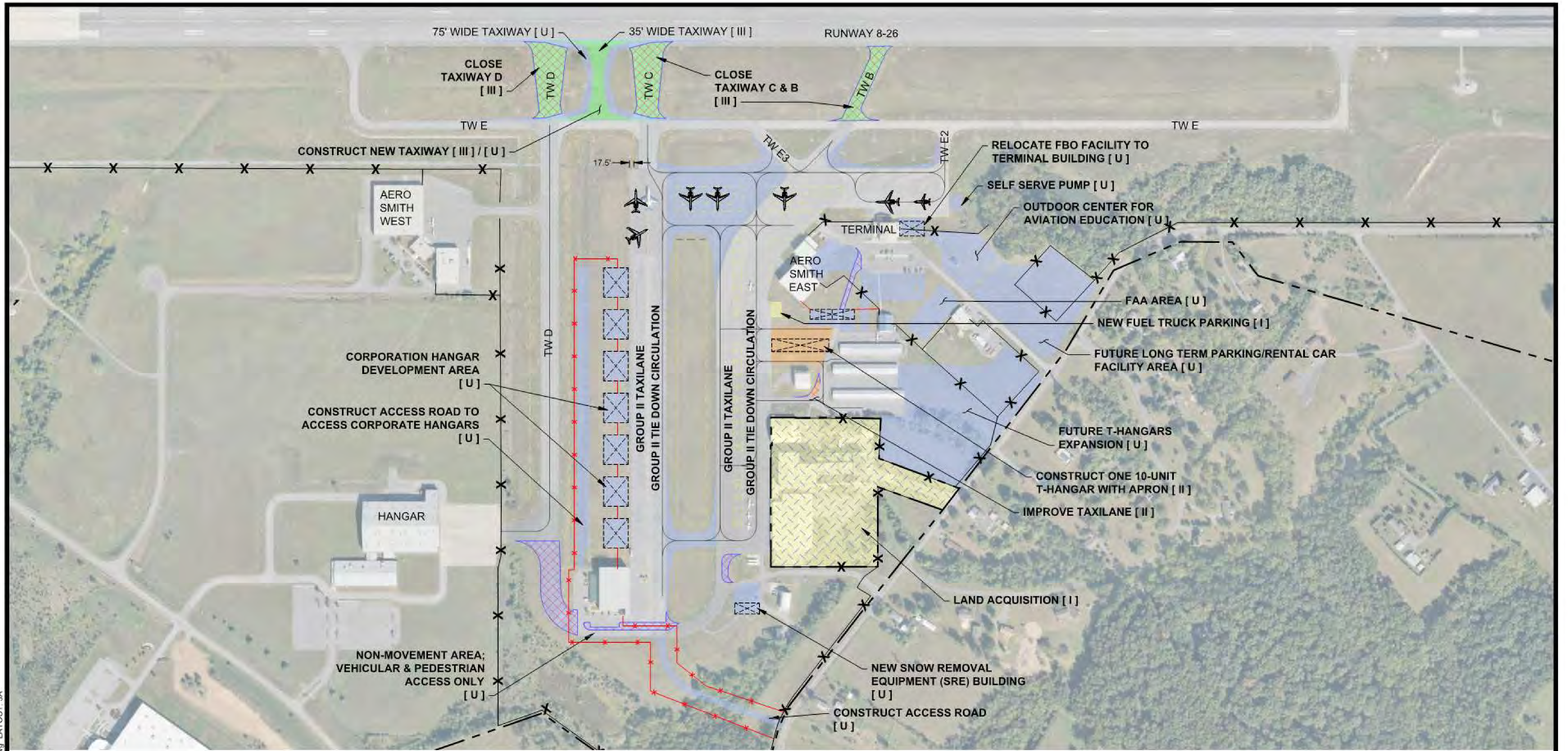
DRAFT



**SOUTH APRON DEVELOPMENT - ALTERNATE 2
EASTERN WEST VIRGINIA REGIONAL AIRPORT**

**EXHIBIT
2**

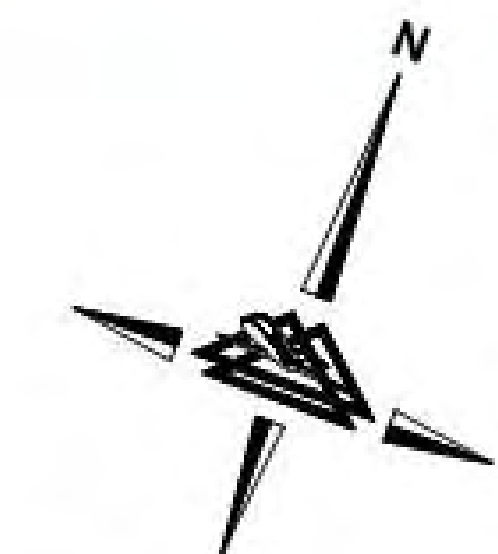
DRAWN BY: MRM / RWW CHECKED BY: CAR / TDH SCALE: 1"=400' DATE: MARCH 2018



DRAWING: 16051-001-Alt 3A -Terminal Area UII Development.dwg LAYOUT: 3A

LEGEND			
DESCRIPTION	EXISTING	FUTURE	ULTIMATE
AIRPORT BUILDINGS	NA		
LAND ACQUISITION	NA		
PAVEMENT REMOVAL / BLDG DEMO	NA		SAME
AIRPORT PROPERTY LINE			SAME
FENCE			

DEVELOPMENT PROGRAM	
PHASE I DEVELOPMENT (0 - 5)	[I]
PHASE II DEVELOPMENT (6 - 10)	[II]
PHASE III DEVELOPMENT (11 - 20)	[III]
ULTIMATE DEVELOPMENT (BEYOND 20)	[U]



DRAFT

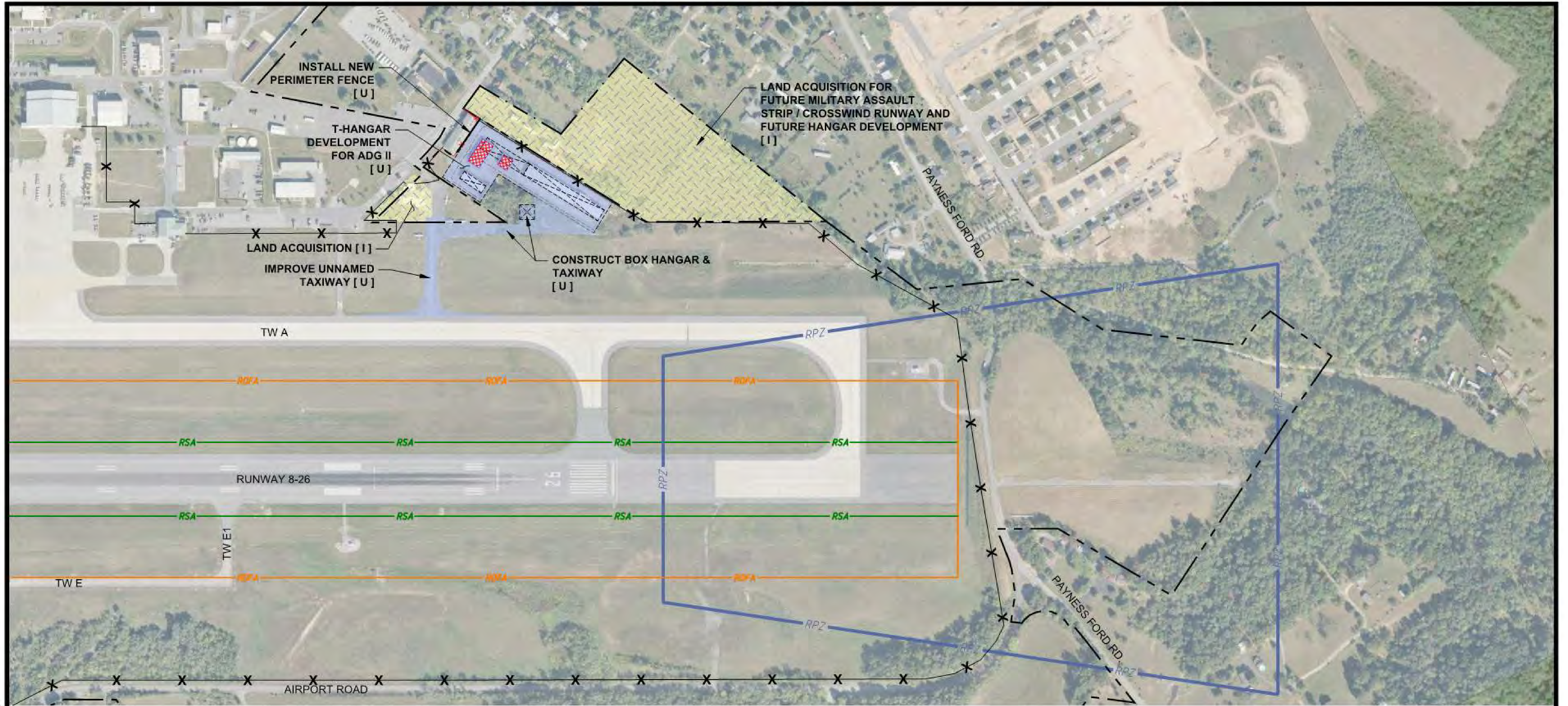


**SOUTH APRON DEVELOPMENT - ALTERNATE 3
EASTERN WEST VIRGINIA REGIONAL AIRPORT**

**EXHIBIT
3**

DRAWN BY: MRM / RWW CHECKED BY: CAR / TDH SCALE: 1"=400' DATE: MARCH 2018

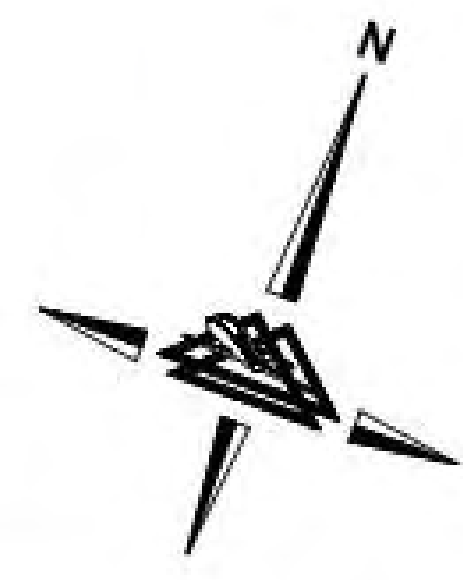




DRAWING: 16051-exh-Alt 1B-Terminal Area Development.dwg LAYOUT: 1B

LEGEND			
DESCRIPTION	EXISTING	FUTURE	ULTIMATE
AIRPORT BUILDINGS	NA		
LAND ACQUISITION	NA		
PAVEMENT REMOVAL / BLDG DEMO	NA		SAME
AIRPORT PROPERTY LINE			SAME
RUNWAY OBJECT FREE AREA (ROFA) B-II		SAME	SAME
RUNWAY SAFETY AREA (RSA) B-II		SAME	SAME
RUNWAY PROTECTION ZONE (RPZ)			
FENCE			

DEVELOPMENT PROGRAM	
PHASE I DEVELOPMENT (0 - 5)	[I]
PHASE II DEVELOPMENT (6 - 10)	[II]
PHASE III DEVELOPMENT (11 - 20)	[III]
ULTIMATE DEVELOPMENT (BEYOND 20)	[U]



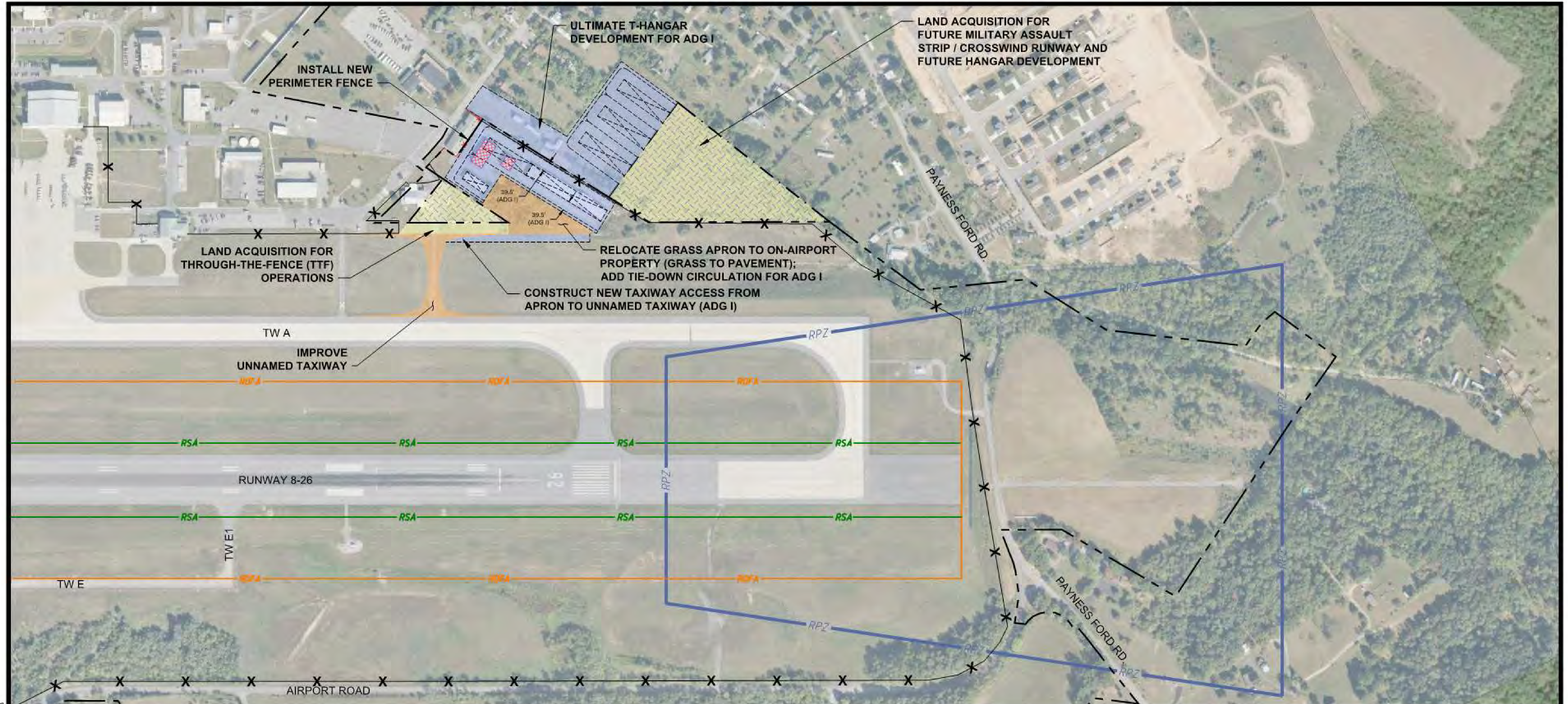
**NORTH APRON DEVELOPMENT - ALTERNATE 1
EASTERN WEST VIRGINIA REGIONAL AIRPORT**

**EXHIBIT
1**

DRAWN BY: MRM / RWW CHECKED BY: CAR / TDH SCALE: 1"=400' DATE: APRIL 2018

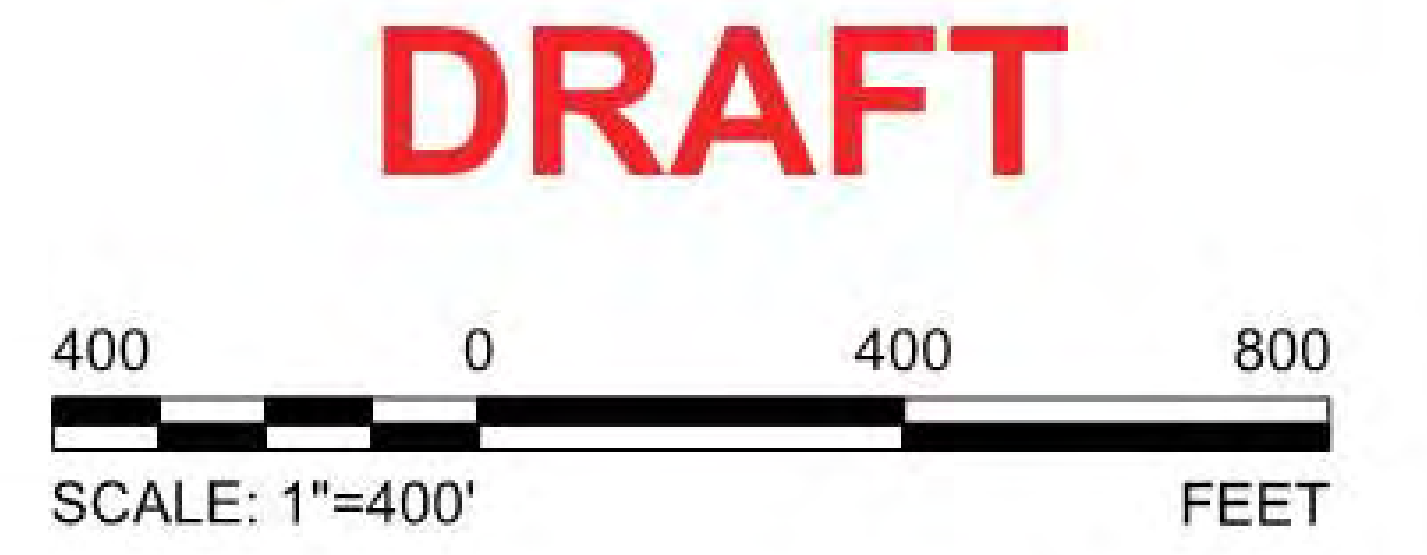
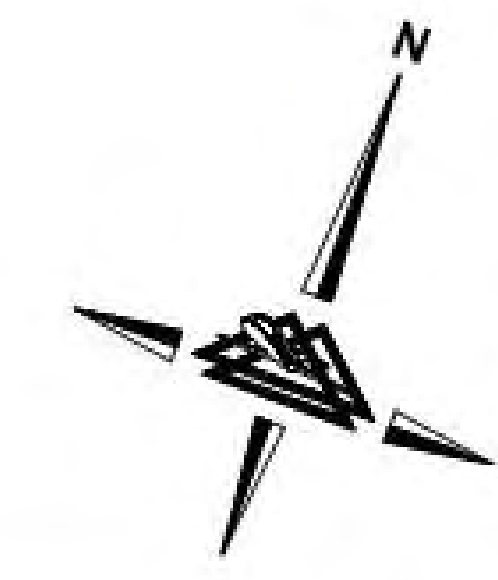


16051-exh-Alt 1B-Terminal Area Development.dwg LAYOUT: 1B



LEGEND			
DESCRIPTION	EXISTING	FUTURE	ULTIMATE
AIRPORT BUILDINGS	NA		
LAND ACQUISITION	NA		
PAVEMENT REMOVAL / BLDG DEMO	NA		SAME
AIRPORT PROPERTY LINE			SAME
RUNWAY OBJECT FREE AREA (ROFA) B-II		SAME	SAME
RUNWAY SAFETY AREA (RSA) B-II		SAME	SAME
RUNWAY PROTECTION ZONE (RPZ)			
FENCE			

DEVELOPMENT PROGRAM	
PHASE I DEVELOPMENT (0 - 5)	[I]
PHASE II DEVELOPMENT (6 - 10)	[II]
PHASE III DEVELOPMENT (11 - 20)	[III]
ULTIMATE DEVELOPMENT (BEYOND 20)	[U]



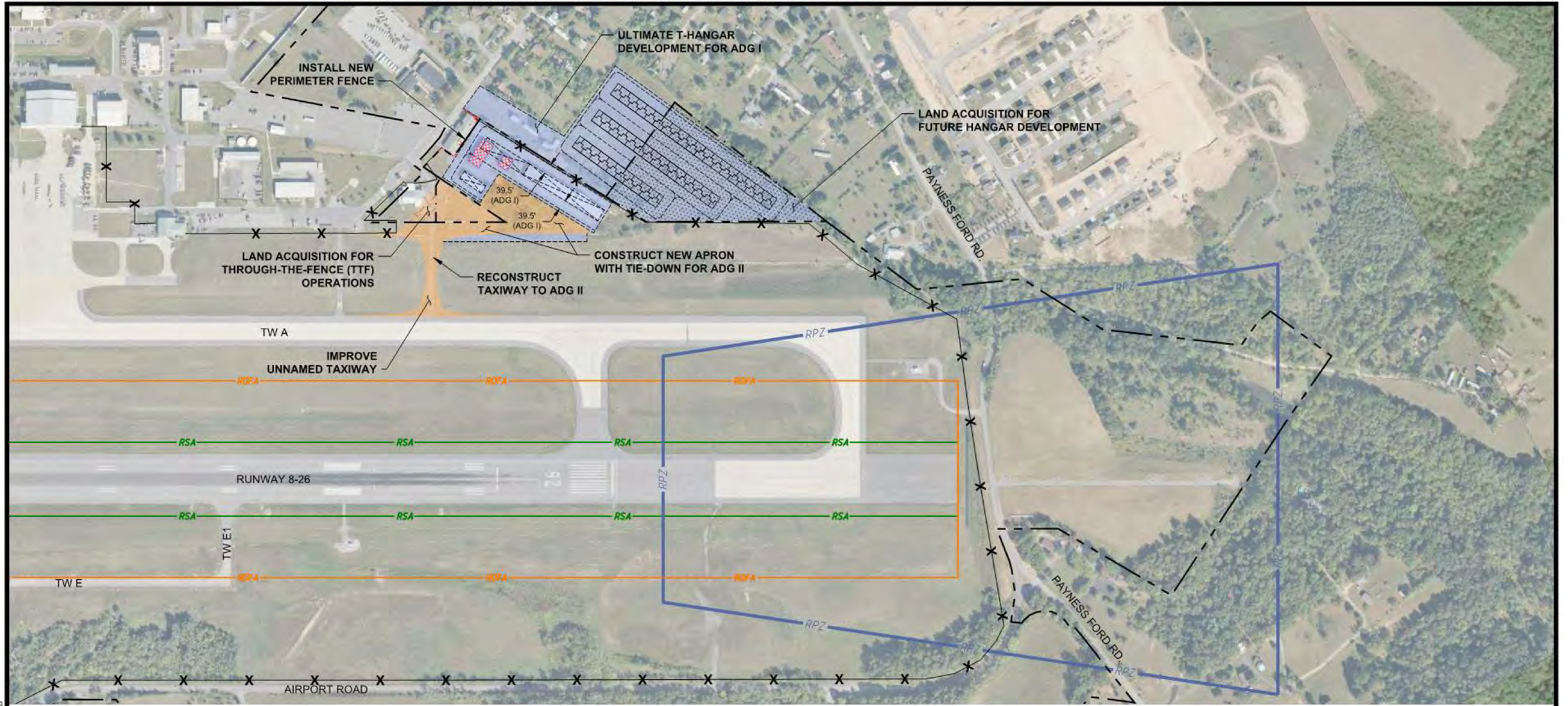
NORTH APRON DEVELOPMENT - ALTERNATE 2 EASTERN WEST VIRGINIA REGIONAL AIRPORT

EXHIBIT
2

DRAWING: 16051-exh-Alt 2B - Terminal Area Development.dwg LAYOUT: 2B



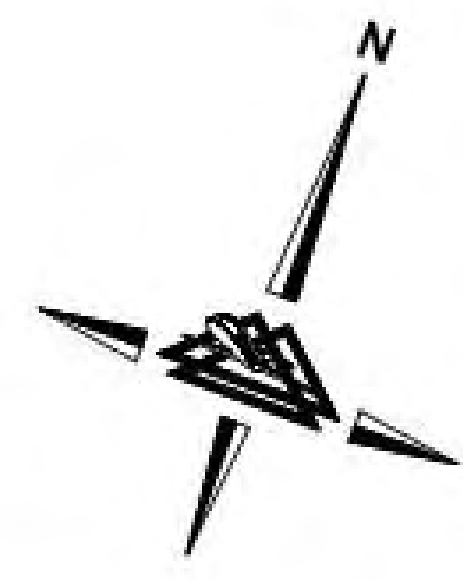
DRAWN BY: MRM / RWW CHECKED BY: CAR / TDH SCALE: 1"=400' DATE: DECEMBER 2017



DRAWING: 16051-exh-Alt 3B - Terminal Area Development.dwg LAYOUT: 3B

LEGEND			
DESCRIPTION	EXISTING	FUTURE	ULTIMATE
AIRPORT BUILDINGS	NA		
LAND ACQUISITION	NA		
PAVEMENT REMOVAL / BLDG DEMO	NA		SAME
AIRPORT PROPERTY LINE			SAME
RUNWAY OBJECT FREE AREA (ROFA) B-II		SAME	SAME
RUNWAY SAFETY AREA (RSA) B-II		SAME	SAME
RUNWAY PROTECTION ZONE (RPZ)			
FENCE			

DEVELOPMENT PROGRAM	
PHASE I DEVELOPMENT (0 - 5)	[I]
PHASE II DEVELOPMENT (6 - 10)	[II]
PHASE III DEVELOPMENT (11 - 20)	[III]
ULTIMATE DEVELOPMENT (BEYOND 20)	[U]



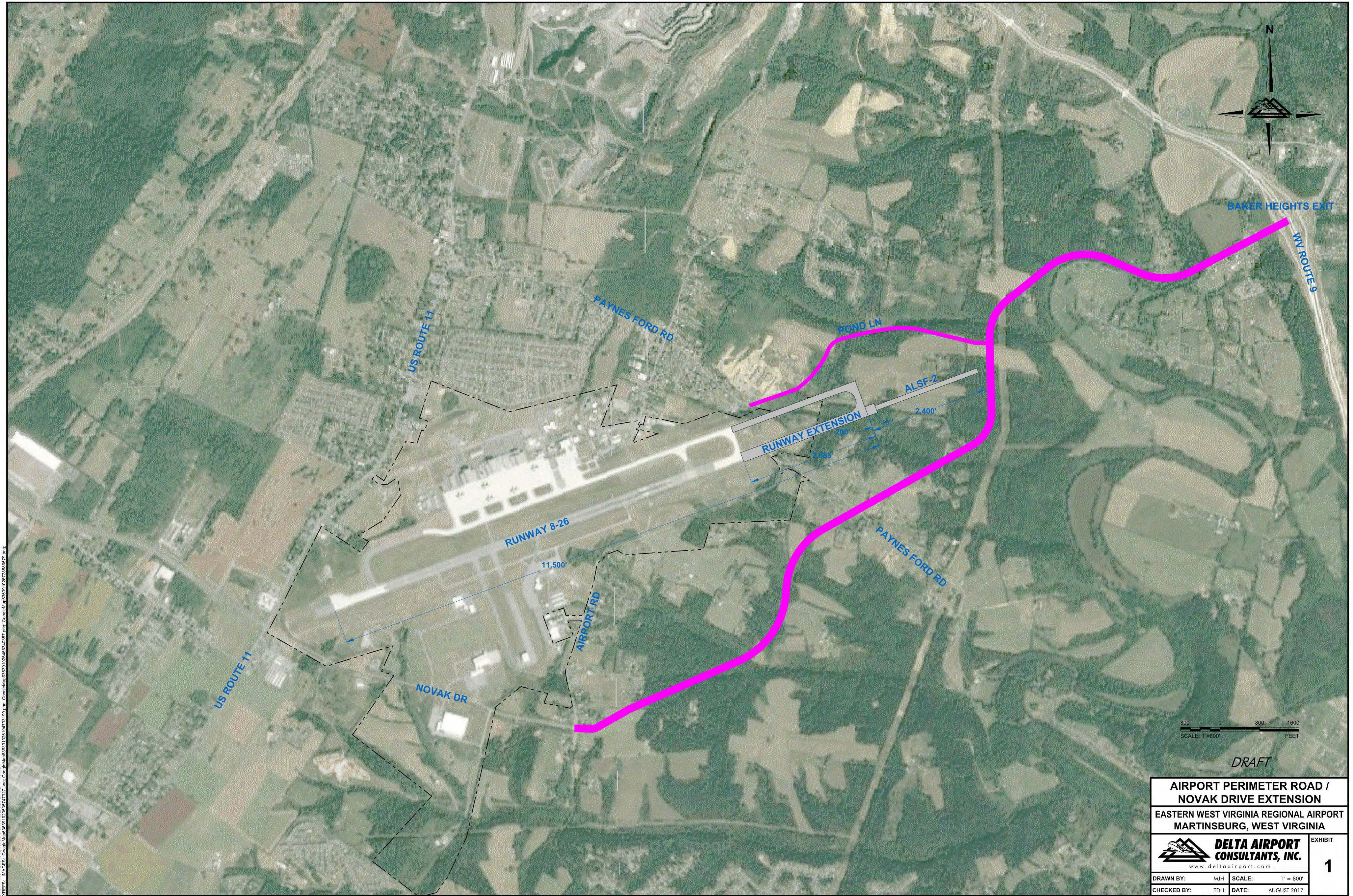
NORTH APRON DEVELOPMENT - ALTERNATE 3 EASTERN WEST VIRGINIA REGIONAL AIRPORT

EXHIBIT
3

DRAWN BY: MRM / RWW CHECKED BY: CAR / TDH SCALE: 1"=400' DATE: DECEMBER 2017



16051-Exh-Alt 3B - Terminal Area Development.dwg, Job: 27/21/2010 4:10:33 PM



DRAFT

**AIRPORT PERIMETER ROAD /
NOVAK DRIVE EXTENSION**
EASTERN WEST VIRGINIA REGIONAL AIRPORT
MARTINSBURG, WEST VIRGINIA



EXHIBIT
1

DRAWN BY: MJH SCALE: 1" = 800'
CHECKED BY: TDH DATE: AUGUST 2017

DRAWING: 16051-road-pro-fo-crosswindrunway.dwg LAYOUT: L1
XREFS: IMAGES: GoogleMap36391026194721198.png GoogleMap36391026194721198.png GoogleMap36391026194721198.png GoogleMap36391026194721198.png