

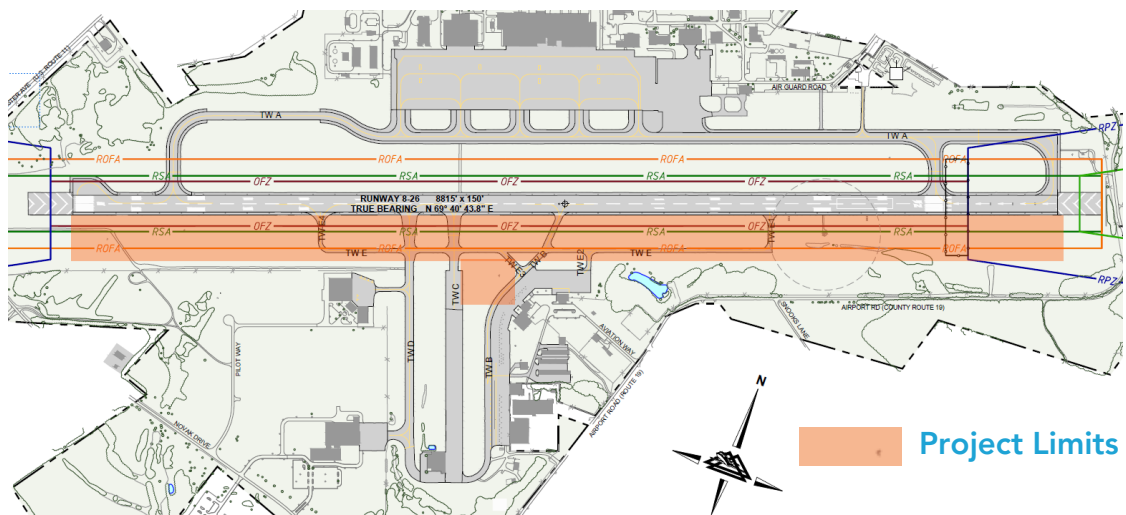
TAXIWAY E EXTENSION



ABOUT THE PROJECT

The Eastern West Virginia Regional Airport Authority (EWVRAA) is proposing to extend Taxiway E to a full-length parallel taxiway serving Runway 8-26. The proposed extension of Taxiway E will include rehabilitation of the existing portion of the taxiway (approximately 4,500 linear feet) and involve milling, overlay, and crack repair, as required. The extension will involve new pavement construction to the existing thresholds for Runway 8-26 including upgrading the taxiway edge lights and signage. Other improvements include vegetation/tree removal, drainage improvements, and sediment control features.

With the extension of Taxiway E to both ends of Runway 8-26, this new full-length Taxiway on the civilian side of the airfield will allow general aviation aircraft to taxi and queue, as needed, without creating unsafe airport operational conditions or inhibiting the West Virginia Air National Guard (ANG) operations.



MORE INFORMATION

For additional information regarding the proposed Taxiway E Extension, please contact Mr. William E. "Bill" Walkup, Airport Operations & Maintenance Manager, at wwalkup@flymrb.com.